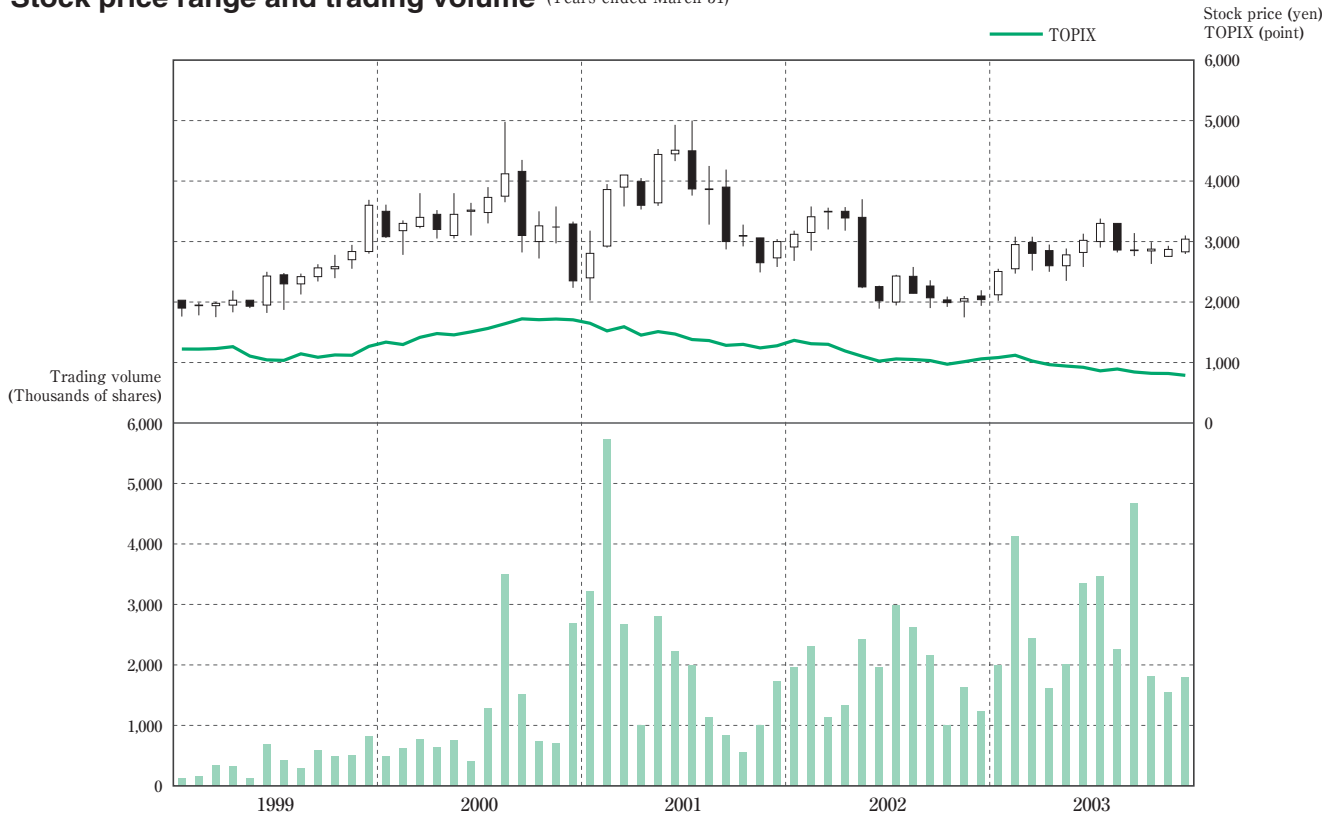


# Stock Information

## Stock price range and trading volume (Years ended March 31)



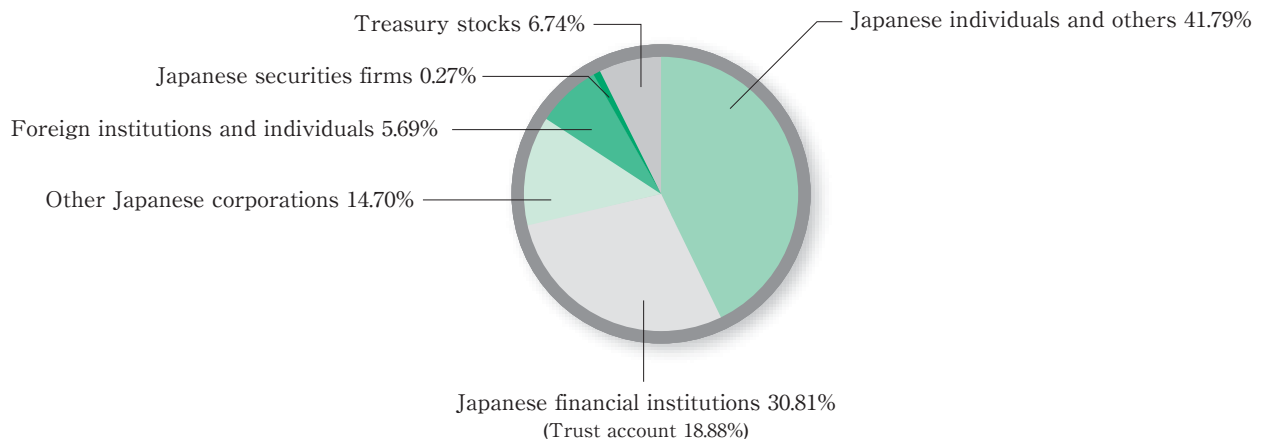
(Years ended March 31)

	1999	2000	2001	2002	2003
Stock price (yen)					
At year-end	3,600	2,350	3,000	2,040	<b>3,040</b>
High	3,690	4,980	5,000	3,700	<b>3,380</b>
Low	1,750	2,235	2,025	1,747	<b>2,020</b>
Number of shares issued at year-end (thousands of shares)	77,708	77,708	77,708	77,710	<b>77,718</b>
Market capitalization at year-end (millions of yen)	279,748	182,613	233,124	158,528	<b>236,262</b>

Note: Stock prices are based on Tokyo Stock Exchange trading

## Breakdown of shareholders (as of March 2003)

Number of shareholders: 7,552



## Major Shareholders

Shareholders	Number of shares held (1,000 shares)	Voting right ratio (%)
Japan Trustee Services Bank, Ltd. (trust account) ·····	4,942	6.82
Katsuhiro Suzuki ·····	4,752	6.56
Japan Trustee Services Bank, Ltd. ·····	4,500	6.21
(Retirement benefit trust account re-entrusted by The Sumitomo Trust & Banking Co., Ltd. as trustee for Shionogi & Co., Ltd.)		
The Master Trust Bank of Japan, Ltd. (trust account) ·····	3,254	4.49
Hisayo Izawa ·····	2,702	3.73
Hiroko Bessho ·····	2,510	3.46
Kyoko Suzuki ·····	2,477	3.42
Suzuken Employee Stock Ownership Association ·····	2,381	3.28
UFJ Trust Bank Limited (trust account A) ·····	1,431	1.97
Yoshiki Bessho ·····	1,400	1.93

Note: Treasury stock (5,238,000 shares) is not listed in the table.