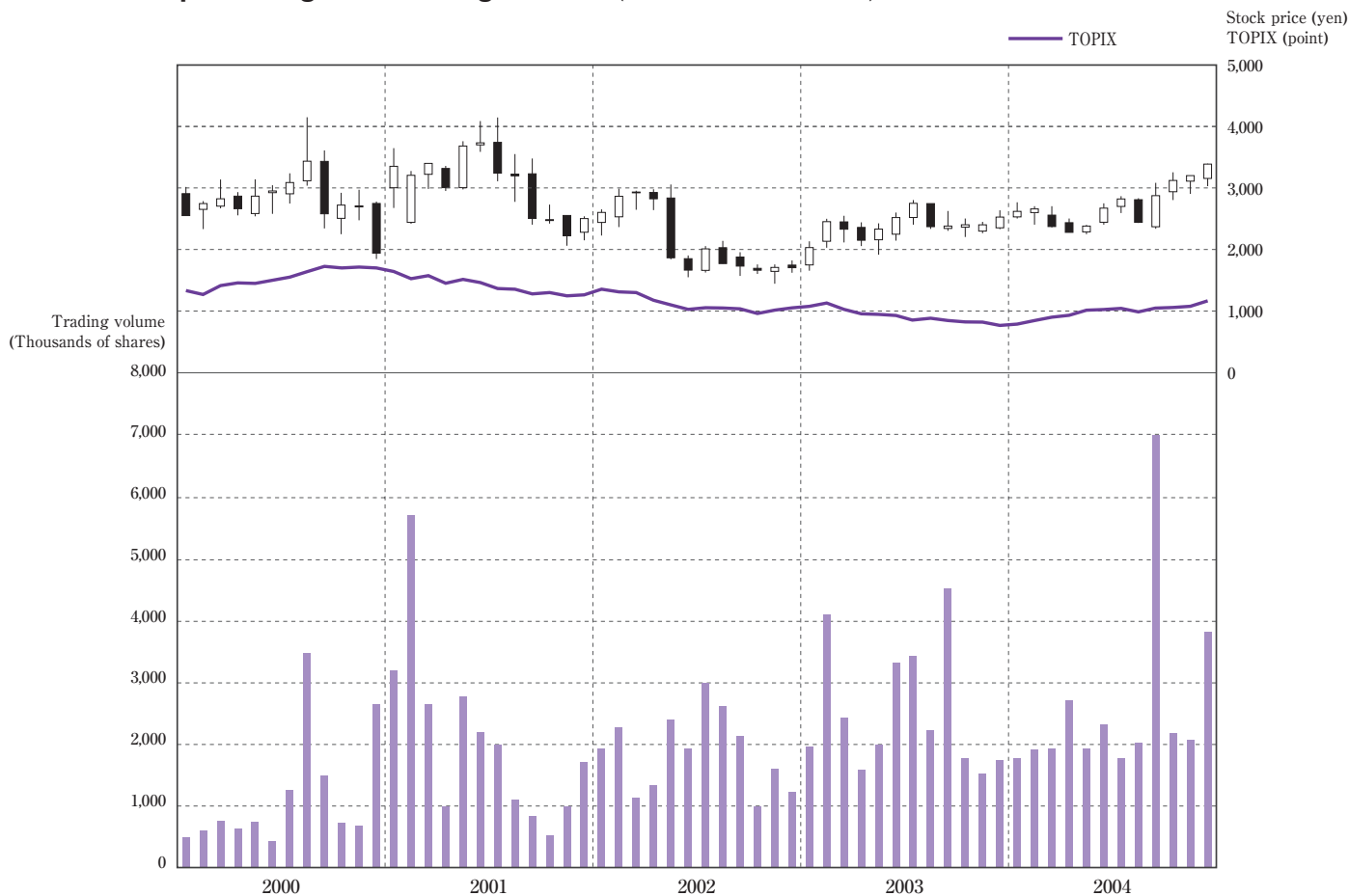


# Stock Information

## Stock price range and trading volume (Years ended March 31)



(Years ended March 31)

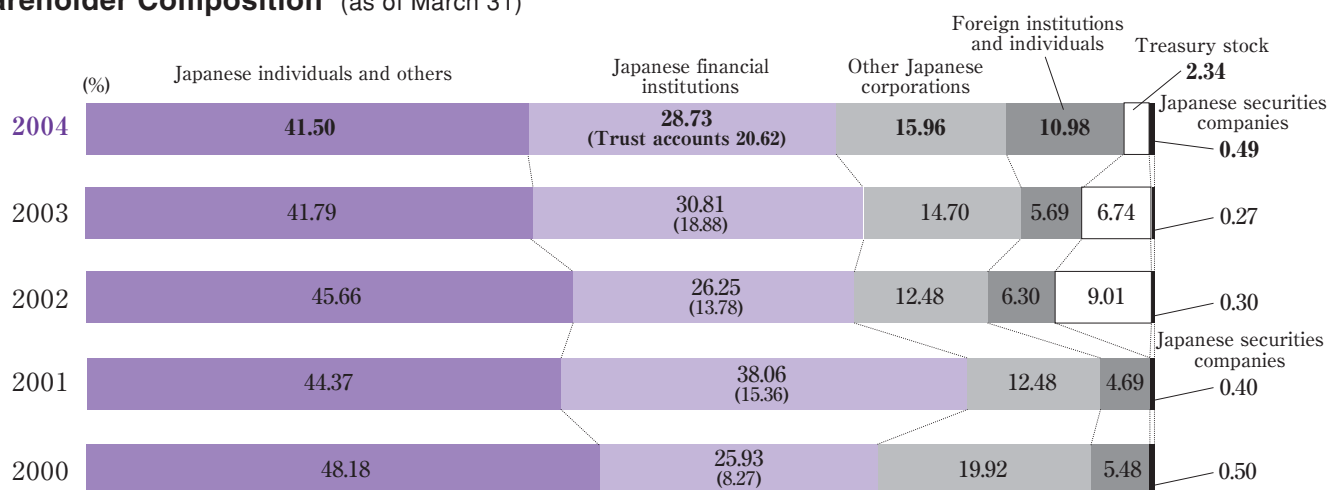
	2000	2001	2002	2003	2004
Stock price (yen)					
At year-end	1,958	2,500	1,700	2,533	<b>3,390</b>
High	4,150	4,166	3,083	2,816	<b>3,400</b>
Low	1,863	1,687	1,455	1,683	<b>2,262</b>
Number of shares issued at year-end (thousands of shares)	93,250	93,250	93,252	93,262	<b>93,262</b>
Market capitalization at year-end (millions of yen)	182,603	233,125	158,528	236,264	<b>316,159</b>

Note: 1. Stock prices are based on trading on the first section of the Tokyo Stock Exchange.

2. Stock prices and shares issued in preceding years are adjusted to reflect the 1-to-1.2 stock split conducted on March 31, 2004 (stock distribution date: May 19).

3. Adjusted stock prices are rounded down to the nearest whole yen.

## Shareholder Composition (as of March 31)



## Major Shareholders (as of March 31, 2004)

	Number of shares held (thousand)	Voting right ratio (%)
Japan Trustee Services Bank, Ltd. (Trust account)	7,522	9.92
Japan Trustee Services Bank, Ltd. (Retirement benefit trust account re-entrusted by the Sumitomo Trust & Banking, Co., Ltd. as trustee for Shionogi & Co., Ltd.)	4,500	5.93
Katsuhiro Suzuki	3,752	4.95
The Master Trust Bank of Japan, Ltd. (Trust account)	3,647	4.81
Suzuken Employee Stock Ownership Association	2,599	3.42
Hiroko Bessho	2,510	3.31
Kyoko Suzuki	2,427	3.20
Hisayo Izawa	1,896	2.50
Shionogi & Co., Ltd.	1,540	2.03
Yoshiki Bessho	1,401	1.84

Note: 1. Treasury stock (1,817,000 shares) is not listed in the table.

2. Investments by Suzuken in Shionogi & Co., Ltd. do not include 4,100,000 shares of stock (1.16% of Shionogi outstanding shares) for which Suzuken retains control over voting rights that Suzuken has transferred to an employee retirement benefit trust.

3. Shareholders of record on March 31, 2004 received a 1-to-1.2 stock split, with new shares distributed on May 19.

Authorized number of shares: 231,000,000

Number of shareholders: 9,233

Number of shares issued: 77,718,626

Trading unit (*tangen*): 100 shares