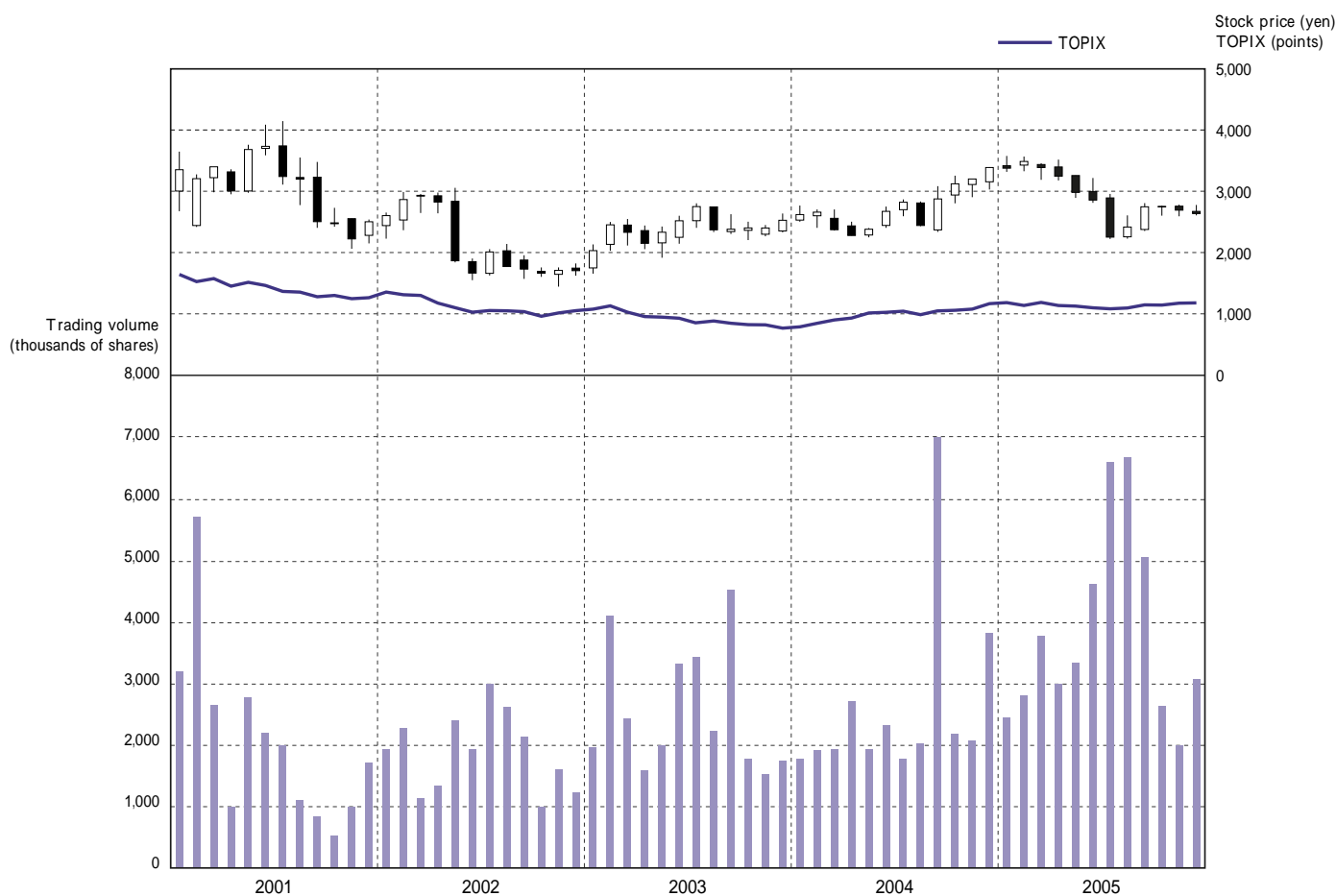


Stock Information

Stock price range and trading volume (Years ended March 31)

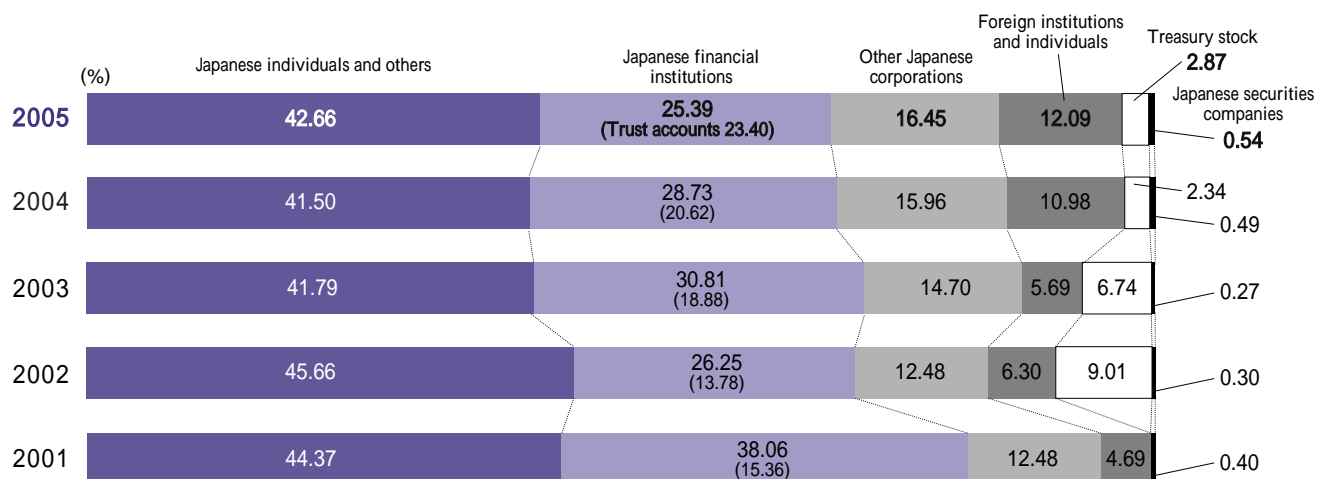


	(Years ended March 31)				
	2001	2002	2003	2004	2005
Stock price (yen)					
At year-end	2,500	1,700	2,533	3,390	2,640
High	4,166	3,083	2,816	3,400	3,580
Low	1,687	1,455	1,683	2,262	2,225
Number of shares issued at year-end					
(thousands of shares)	93,250	93,252	93,262	93,262	93,584
Market capitalization at year-end					
(millions of yen)	233,125	158,528	236,264	316,159	247,062

- Notes: 1. Stock prices are based on trading on the First Section of the Tokyo Stock Exchange.
 2. Stock prices and shares issued in preceding years are adjusted to reflect the 1-to-1.2 stock split conducted on March 31, 2004 (stock distribution date: May 19).
 3. Adjusted stock prices are rounded down to the nearest whole yen.

Shareholder Composition (as of March 31)

Number of shareholders (as of March 31, 2005): 12,670



Major Shareholders (as of March 31, 2005)

Shareholders	Number of shares held (thousands)	Voting right ratio (%)
Japan Trustee Services Bank, Ltd. (Trust account)	6,618	7.30
Japan Trustee Services Bank, Ltd. (Retirement benefit trust account re-trusted by The Sumitomo Trust & Banking, Co., Ltd. as trustee for Shionogi & Co., Ltd.)	5,400	5.96
Katsuhiko Suzuki	4,502	4.97
Suzuken Employee Stock Ownership Association	3,275	3.61
Hiroko Bessho	3,012	3.32
The Master Trust Bank of Japan, Ltd. (Trust account)	2,971	3.28
Kyoko Suzuki	2,912	3.21
Hisayo Izawa	2,269	2.50
Japan Trustee Services Bank, Ltd. (Trust account 4)	2,003	2.21
Shionogi & Co., Ltd.	1,848	2.04

Notes: 1. Treasury stock (2,683,000 shares) is not listed in the table.

2. Investments by Suzuken in Shionogi & Co., Ltd. do not include 4,100,000 shares of stock (1.16% of Shionogi outstanding shares), for which Suzuken retains control over voting rights, that Suzuken has transferred to an employee retirement benefit trust.

Authorized number of shares : 231,000,000

Trading unit (*tangen*) : 100 shares

Number of shares issued : 93,584,167