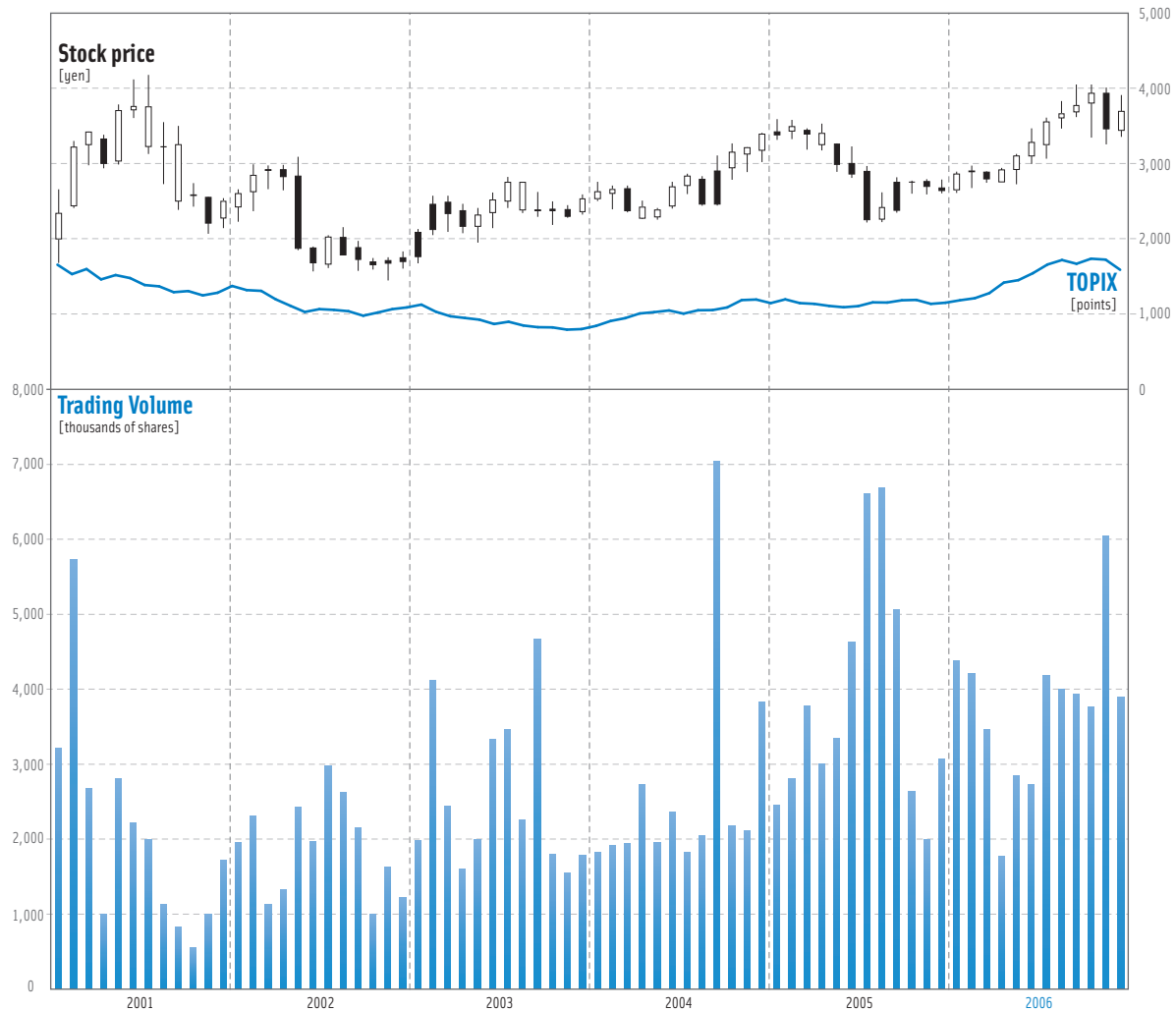


Stock Information

Stock Price Range and Trading Volume

(Years ended March 31)



(Years ended March 31)

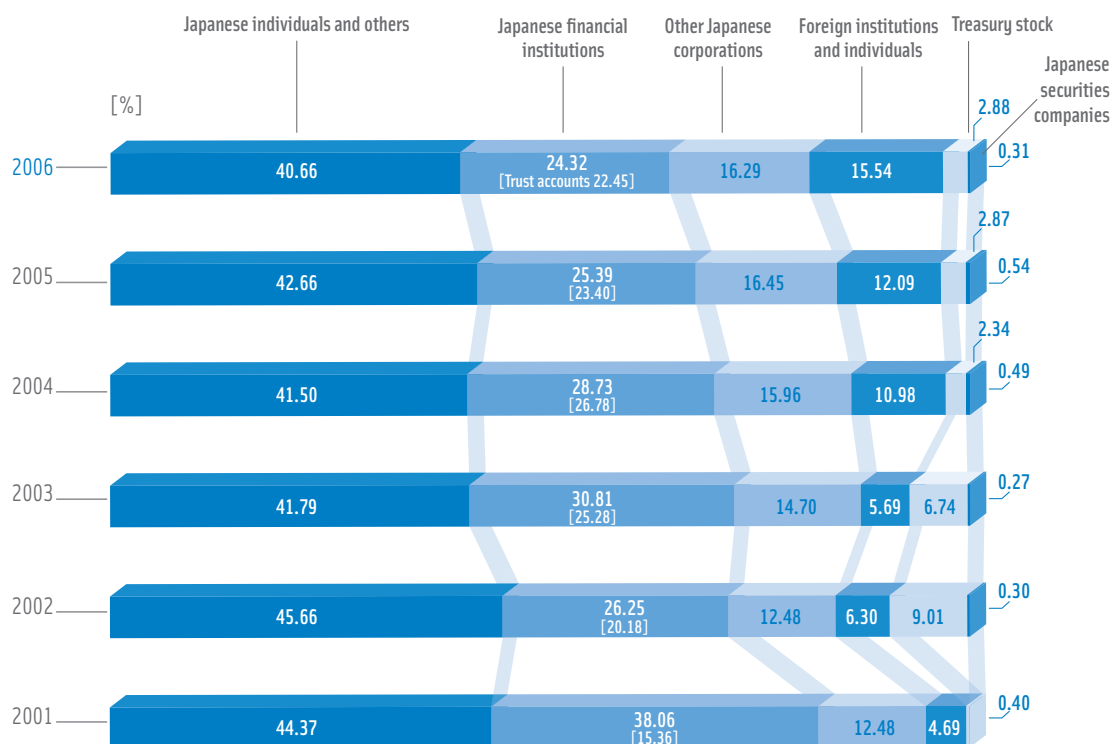
	2001	2002	2003	2004	2005	2006
Stock price (yen)						
At year-end	2,500	1,700	2,533	3,390	2,640	3,690
High	4,166	3,083	2,816	3,400	3,580	4,040
Low	1,687	1,455	1,683	2,262	2,225	2,615
Number of shares issued at year-end (thousands of shares)	93,250	93,252	93,262	93,262	93,584	93,584
Market capitalization at year-end (millions of yen)	233,125	158,528	236,264	316,159	247,062	345,325

Notes:

1. Stock prices are based on trading on the First Section of the Tokyo Stock Exchange.
2. Stock prices and shares issued in preceding years are adjusted to reflect the 1-to-1.2 stock split conducted on March 31, 2004 (stock distribution date: May 19).
3. Adjusted stock prices are rounded down to the nearest whole yen.

Shareholder Composition (as of March 31)

Number of shareholders (as of March 31, 2006) : 10,673



Major Shareholders (as of March 31, 2006)

Shareholders	Number of shares held (thousands)	Voting right ratio (%)
Japan Trustee Services Bank, Ltd. (Trust account)	5,551	6.12
Japan Trustee Services Bank, Ltd. (Retirement benefit trust account re-trusted by The Sumitomo Trust & Banking Co., Ltd. as trustee for Shionogi & Co., Ltd.)	5,400	5.96
Katsuhiko Suzuki	4,502	4.97
Suzuken Employee Stock Ownership Association	3,095	3.41
Hiroko Bessho	3,012	3.32
Kyoko Suzuki	2,912	3.21
The Master Trust Bank of Japan, Ltd. (Trust account)	2,893	3.19
Hisayo Izawa	2,260	2.49
Shionogi & Co., Ltd.	1,848	2.04
Astellas Pharma Inc.	1,695	1.87

Notes:

- Treasury stock (2,693,000 shares) is not listed in the table.
- Investments by Suzuken in Shionogi & Co., Ltd. do not include 4,100,000 shares of stock (1.16% of Shionogi's outstanding shares), for which Suzuken retains control over voting rights, that Suzuken has transferred to an employee retirement benefit trust.
- Investments by Suzuken in Astellas Pharma Inc. do not include 1,065,000 shares of stock (0.18% of Astellas Pharma's outstanding shares), for which Suzuken retains control over voting rights, that Suzuken has transferred to an employee retirement benefit trust.

Number of shares authorized: **374,000,000**

Trading unit (*tangen*): **100 shares**

Number of shares issued: **93,584,167**