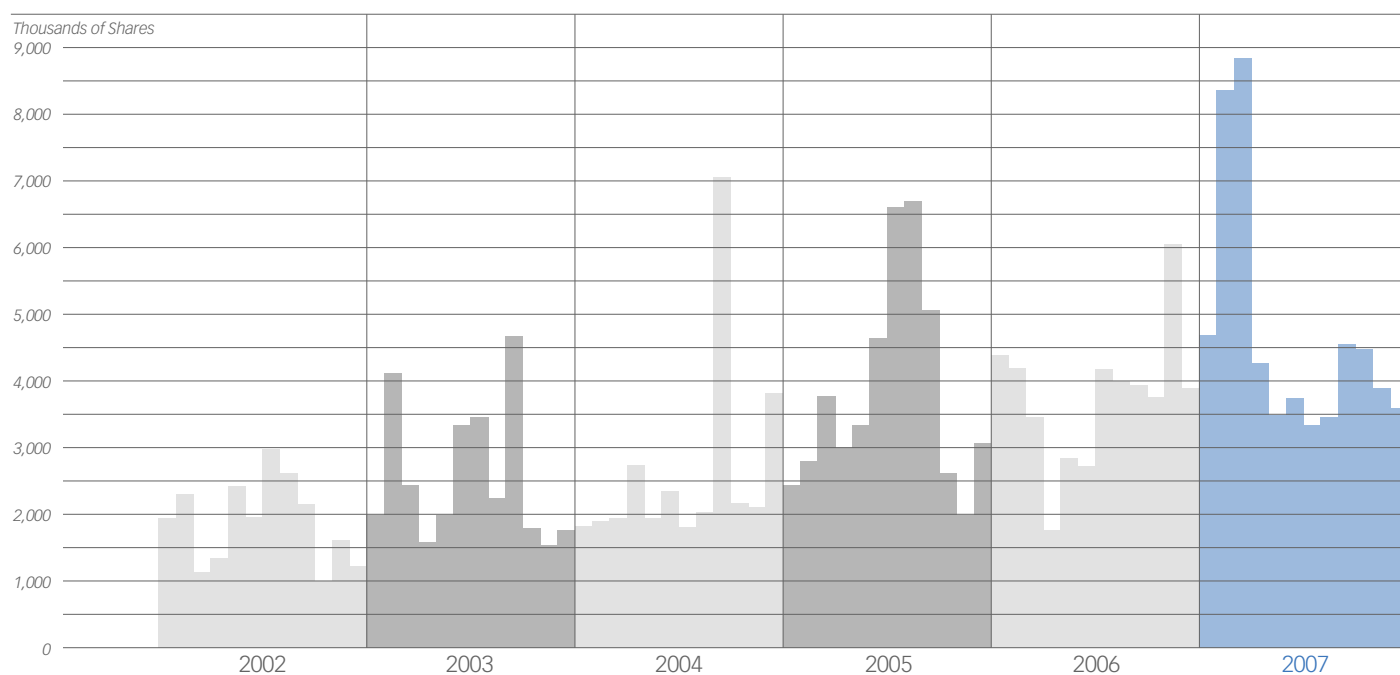
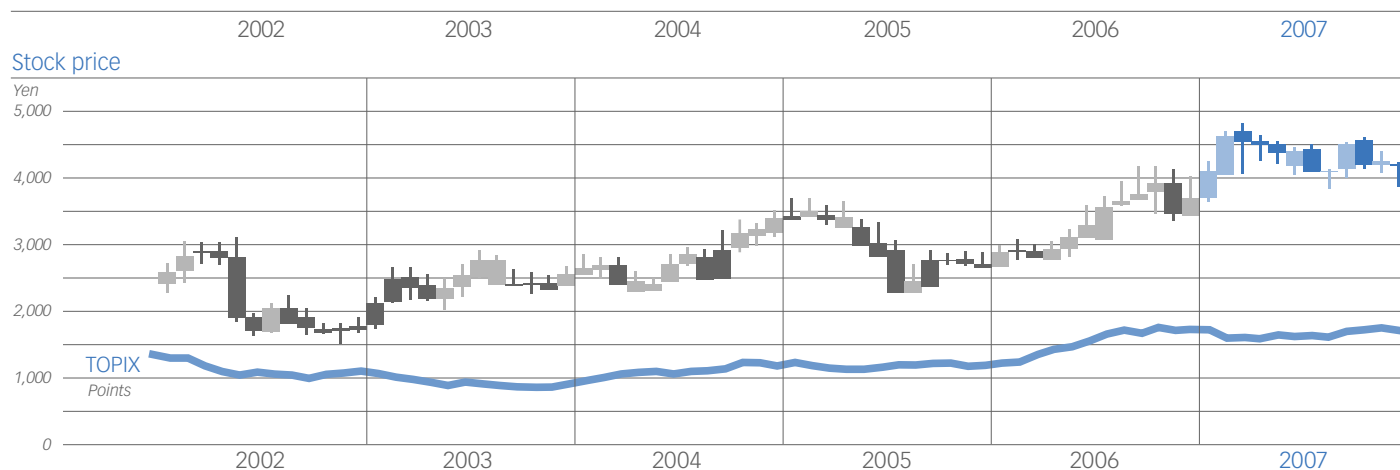


Stock Information

Stock Price Range and Trading Volume

Years ended March 31



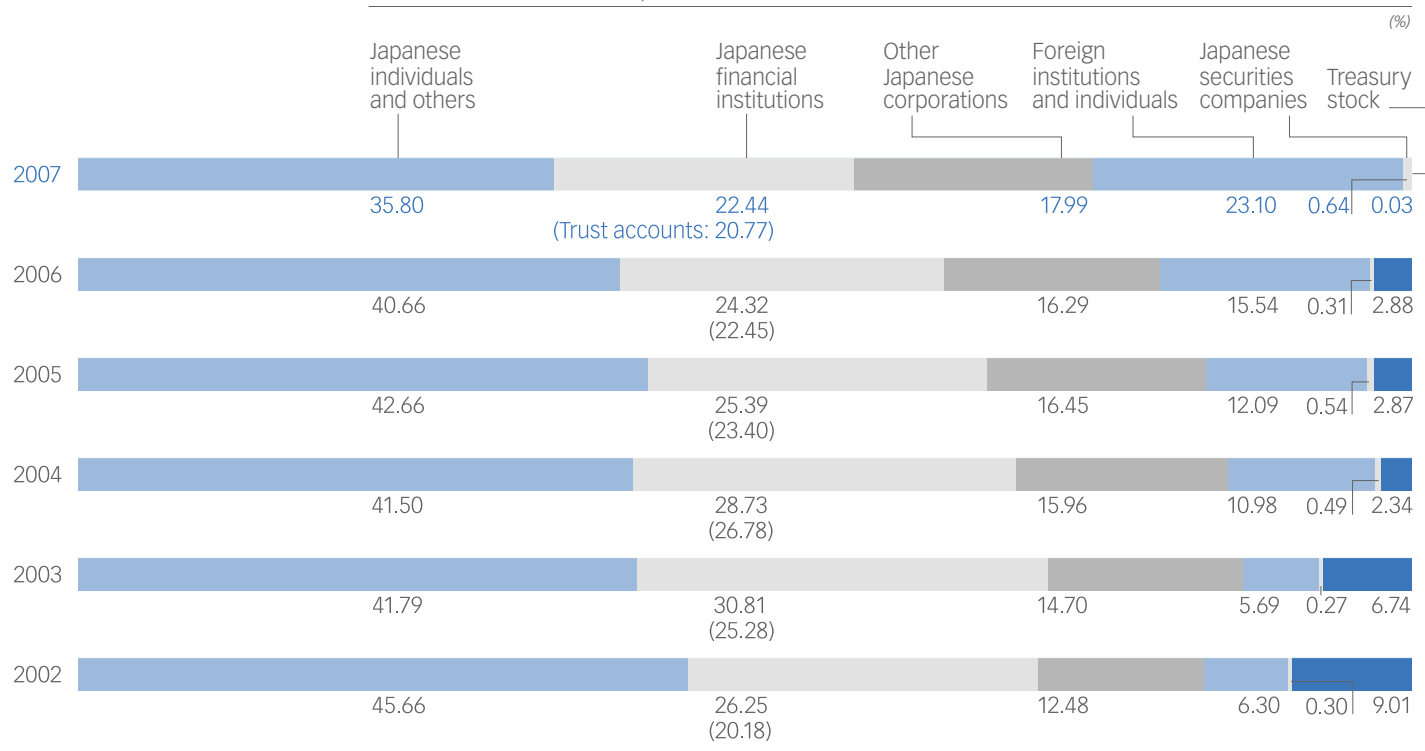
	2002	2003	2004	2005	2006	2007
Stock price:						
At year-end	1,700	2,533	3,390	2,640	3,690	4,180
High	3,083	2,816	3,400	3,580	4,040	4,830
Low	1,455	1,683	2,262	2,225	2,615	3,650
Number of shares issued at year-end	93,252	93,262	93,262	93,584	93,584	93,949
Market capitalization at year-end	158,528	236,264	316,159	247,062	345,325	392,707

- Notes:
- 1 Stock prices are based on trading on the First Section of the Tokyo Stock Exchange.
 - 2 Stock prices and shares issued in preceding years are adjusted to reflect the 1-to-1.2 stock split conducted on March 31, 2004 (stock distribution date: May 19).
 - 3 Adjusted stock prices are rounded down to the nearest whole yen.

Shareholder Composition

As of March 31, 2007

Number of shareholders: 10,359



Major Shareholders

As of March 31, 2007

Shareholders:	Number of shares held (Thousands)	Voting right ratio (%)
Japan Trustee Services Bank, Ltd. (Retirement benefit trust account re-trusted by The Sumitomo Trust & Banking Co., Ltd. as trustee for Shionogi & Co., Ltd.)	5,400	5.76
City Bank Singapore-Barclays Bank (Suisse) S.A.	4,496	4.80
Japan Trustee Services Bank, Ltd. (Trust account)	4,102	4.38
Shionogi & Co., Ltd.	3,295	3.52
Hiroko Bessho	3,012	3.21
Suzuken Employee Stock Ownership Association	2,964	3.16
Kyoko Suzuki	2,837	3.03
The Master Trust Bank of Japan, Ltd. (Trust account)	2,371	2.53
Hisayo Izawa	2,254	2.40
Eisai Co., Ltd.	1,892	2.02

- Number of shares authorized: 374,000,000
- Trading unit (*tangen*): 100 shares
- Number of shares issued: 93,949,167